

# AMERICAN NURSE

OFFICIAL JOURNAL  
 American Nurses Association

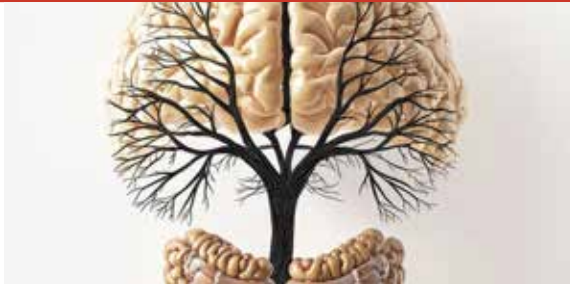
June 2026 • Volume 21 • Number 6  
MyAmericanNurse.com

## EDITORIAL

### 4 Editorial

*By Lillee Gelinas, Editor-in-Chief*  
The nursing implications of GLP-1s

## FEATURES



- 6 **ANCC CNE** Microbiome and depression  
*By Debra Rose Wilson and Leslie Binford*  
What role does the gut microbiome play in mental health?



- 11 PPE and effective communication  
*By Geraldine Guerra-Sandoval, Stephen H. Hernandez, and Patricia Watts-Kelley*  
Nursing education's role in addressing communication barriers created by PPE.

## STRICTLY CLINICAL



- 48 The GLP-1 revolution  
*By Laura Swoboda*  
These medications have wide-ranging applications.
- 56 Peritonsillar abscess  
*By Aaron Sebach and Jessica Stoner*  
An astute triage nurse promptly identifies the condition and takes quick action.

## LEADING THE WAY

- 15 Resounding recognition  
*By Jennifer Mensik Kennedy*  
The American Nurses Association celebrates its 130th anniversary.



## PRACTICE MATTERS

### ETHICS INBOX

- 46 Navigating digital privacy after death  
*By Kara Curry*  
Can nurses ethically help family members gain access to a loved one's phone after death?



### PLEASE SHARE YOUR FEEDBACK!

We want to learn more about your experience with *American Nurse Journal*. Scan the QR code to share your thoughts in a brief survey. Your input will help us ensure the quality of the journal.



[bit.ly/3qFji4f](https://bit.ly/3qFji4f)

*American Nurse Journal* (ISSN 2689-9272) is published monthly by HealthCom Media, 5219 Militia Hill Rd., Plymouth Meeting, PA 19462. Printed in the U.S.A. Copyright © 2026 by HealthCom Media. All rights reserved. No part of this publication may be reproduced, stored, or transmitted in any form or by any means, electronic or mechanical, including photocopy, recording, or any information storage and retrieval system, without permission in

writing from the copyright holder. Periodicals Postage paid at Southeastern, PA 19399-9944 and additional offices.

**Postmaster:** Send address changes to *American Nurse Journal*, 5219 Militia Hill Rd., Plymouth Meeting, PA 19462.

**Subscription information:** Annual subscriptions: \$49.00 U.S.; \$59.00 Canada; \$71.00 outside U.S./Canada. Single copies: \$7 U.S.; \$15 outside U.S. Institutional subscriptions available by request. Digital-only subscription: \$14.97.

**Reprints and back issues:** Contact Chris Evans Gartley (Production Director) at 215-489-7000 or [production@healthcommedia.com](mailto:production@healthcommedia.com). Availability may be limited.



### 30 Men's health equity

By Julian Gallegos, Jason Mott, Curry Bordelon, and Brent MacWilliams

Using the Power of Nurses™ to close a gap.



#### WEB EXCLUSIVE!

#### News & Notes

Access a round-up of clinical and practice news and alerts at [myamericannurse.com/category/news](http://myamericannurse.com/category/news).

## NURSING EXCELLENCE



### 18 Senior social in acute care

By Jo Anne Foley and Ann Carey

Learn about a project aimed at reducing social isolation and providing mental stimulation.



### 24 Human factors design: Safety and medication administration

By Julie Murphy, Dorothy Miller, Kathryn Gustafson, Alexandra Paulson, Jennifer Treseler, Kate Becla, and Kate Donovan

This simple and scalable innovation solves a common problem.

## FROM INSIGHT TO ACTION



### 41 Beyond the bite

By Jessica Gregg and Kristin Eckenrode

Learn how to recognize and respond to Lyme neuroborreliosis.

## AMERICAN NURSES ASSOCIATION ON THE FRONTLINE



### 33 Learn about the top issues facing ANA member nurses, how ANA is working for you, and what ANA is doing to advance nursing.

**THIS ISSUE:** Advanced nursing education

## COMING NEXT MONTH

- CNE: Ultrasound guidance and PIV insertion
- Empower nurses to address vaccine hesitancy
- Nurse handoff and cardiac care

#### Subscription Questions?

ANA members: [memberinfo@ana.org](mailto:memberinfo@ana.org) or (800) 284-2378  
Subscribers: [subscriptions@healthcommmedia.com](mailto:subscriptions@healthcommmedia.com) or (215) 489-7000

#### Change in Mailing Information?

ANA members: [memberinfo@ana.org](mailto:memberinfo@ana.org) or (800) 284-2378  
Subscribers: [subscriptions@healthcommmedia.com](mailto:subscriptions@healthcommmedia.com) or (215) 489-7000

#### Indexing

*American Nurse Journal* is indexed in the Cumulative Index to Nursing and Allied Health Literature.

#### Submit an Article

Please email Julie Nyhus, MSN, FNP-BC, APRN, at [atjnyhus@healthcommmedia.com](mailto:atjnyhus@healthcommmedia.com). In the email, describe the topic of your proposed article and why it would be of interest to the readers of *American Nurse Journal*; include your name, credentials, employer, and phone number. We'll let you know

if we're interested in the article you've proposed and can advise you on how to focus it. For more information, please refer to the Author Guidelines ([MyAmericanNurse.com/author-guidelines](http://MyAmericanNurse.com/author-guidelines)).

#### Send a Letter to the Editor

Your input is vital in ensuring that *American Nurse Journal* is a valuable resource to your practice. You can email a Letter to the Editor at [MyAmericanNurse.com/send-letter-editor](mailto:MyAmericanNurse.com/send-letter-editor).